

NOVA Energy & Automation



## Product Specifications

# Warning Light Control Cabinet

Model NEA020RL

A 3D perspective rendering of a warning light control cabinet. The cabinet is shown in a dark blue color with a metallic finish. It has a rectangular shape with a slightly recessed front panel. The rendering is set against a white background with a light blue and grey shadow effect. The date "01 October 2012" is printed in white on the right side of the cabinet's front panel.

01 October 2012

# Product Description

## 1. Standard Applications

The Nova NEA020RL is an integrated lighting controller designed to meet the hospital-grade lighting power requirements of medical imaging suites. The low voltage control panel provides a safe, low voltage interface between the imaging equipment, warning lights, operator's control, and room line voltage.

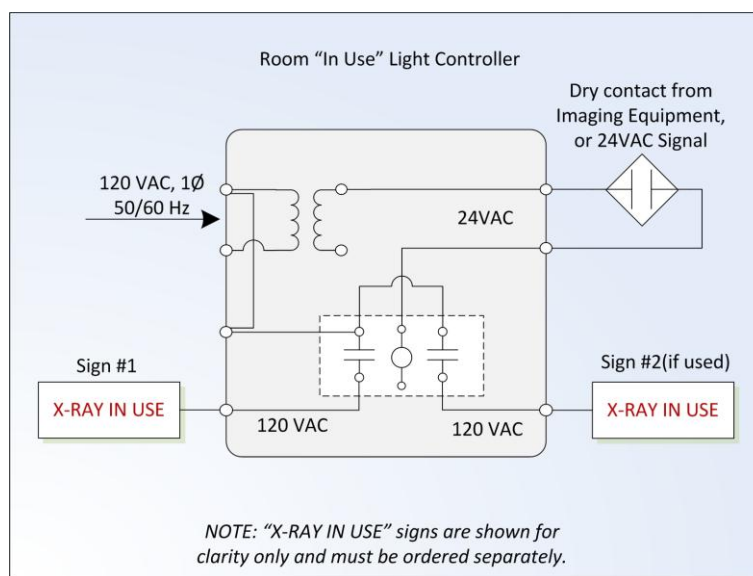


Figure 1 Nova Warning Light Controller Application Diagram

## 2. System Compatibility

The Nova NEA020RL is compatible with the following medical imaging equipment:

GE Medical CT models 2-64 slice : Discovery CT, Optima CT, Lightspeed VCT/RT, Brivo, Brightspeed, Hispeed (Advantage), Prospeed, and several other similar installations.

GE Medical Nuclear Medicine models: Discovery NM/CT, Infinia II/Hawkeye, and several other similar installations.

GE Medical PET models: Discovery PET/CT VCT, and several other similar installations.

GE Medical Radiography models: Discovery XR, Optima, Brivo, Definium 5000, Silhouette, Proteus, and several other similar installations.

GE Medical Interventional Medicine Cath Lab/ Bi Plane: Innova 2121/3131, and several other similar installations.

### 3. Identification

GE Healthcare- The proper panel can be identified on GE Healthcare Drawings: sheet E1 → Junction Point Descriptions → XRLC Warning Light controller: Equal to E4502RL, E4500AM, E4500AK

### 4. Features/ Benefits

#### Features

- Integrated design provides all of the lighting controls into an easy to configure panel
- Utilizes heavy duty contacts to handle light currents.
- Controls up to 2 separate warning lights
- UL and cUL listed to conform to NEC.
- Labeled to conform with NFPA99, NFPA-70.
- Provides a fixed junction point for the lighting system
- Compact size for easy installation
- Short circuit and overload protection
- Thermal protection
- No minimum load required
- Factory wired and tested.
- Simple field configuration can accommodate several different equipment installations.
- Integrated "Hospital Supplied" 24VAC power source

#### Benefits

- Designed, tested, and installed on hundreds of projects worldwide
- Acceptable low cost alternative to GE
- Reduced weight- all components are within a small 20lb enclosure
- Eliminates the multiple lighting control systems
- Reduces installation time and cost by eliminating delays in obtaining individually enclosed components and by eliminating on site assembly.
- Provides a standardized platform for other future modifications or upgrades.



Figure 2 Nova Warning Light Controller- Inside

## 5. Specifications

<b>Model</b>	NEA020RL
<b>Application</b>	Warning Light controls for medical imaging equipment
<b>Input Voltage</b>	110VAC (please specify if other voltage requirements are needed)
<b>Input Current</b>	AC input (maximum): 12 A
<b>Control Voltage</b>	Internally derived 24VAC for controls
<b>Maximum Lighting Load</b>	20 Amps
<b>Warning Light Controls</b>	Compatible with up to 2 warning lights , LED or incandescent
<b>Approvals</b>	UL/cUL



Figure 3 Nova Lighting Controller- Outside

All four sides have removable gland plates for easy mounting of conduit fittings.

## 6. Weight and Dimensions

<b>Mounting</b>	Warning Light Controller is provided in a steel enclosure suitable for surface, wall or above the ceiling mounting.
<b>Dimensions</b>	Height: 12" (300mm) Width:8" (200mm) Depth: 6" (150mm)
<b>Weight</b>	21 lbs. (9.5 kg)
<b>Mounting</b>	Rear wall mounting holes (4). Spaced 0.79" (20mm) from enclosure edge. Optional mounting brackets are available
<b>Enclosure</b>	16 Gauge Carbon Steel, all rounded corners 1 gland plate in the enclosure base.
<b>Enclosure Sealing</b>	Foamed-in place polyurethane door gasket
<b>Finish</b>	Dip coat primed, powder coated in textured RAL 7035
<b>Cover</b>	Screw type cover
<b>Interior Panel</b>	Zinc-Plated subpanel
<b>Protection Category</b>	IP 66 to EN60 529/09:2000, complies with NEMA 4 Enclosure Approvals: UL, CSA, TUV, GL, Lloyds, VDE, Bureau Veritas

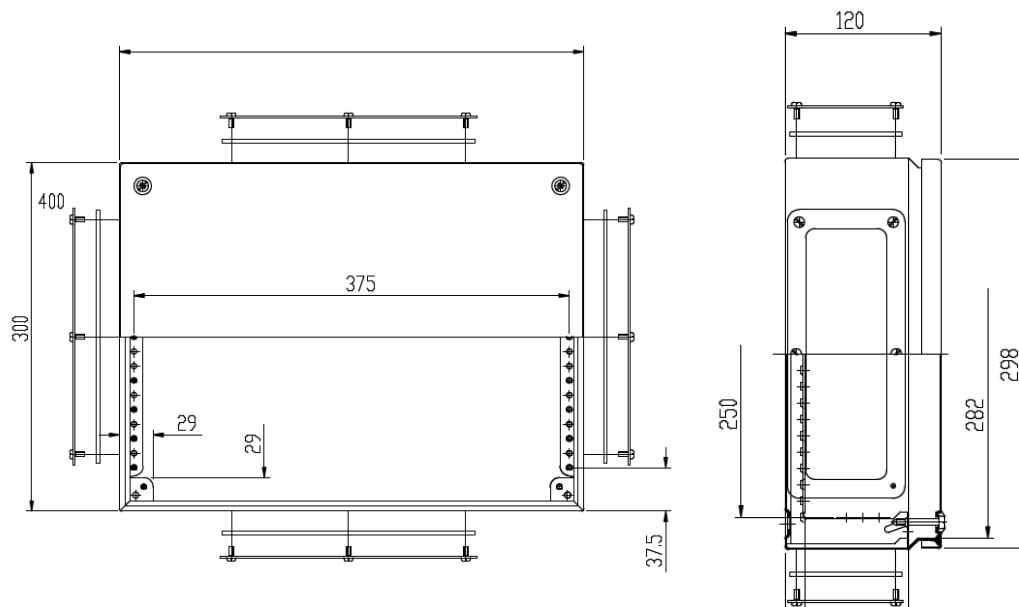


Figure 4 Enclosure Dimensions (mm): Outside, Depth

All four sides have removable gland plates for easy mounting of conduit fittings.

## 7. Warranty

This limited warranty set forth below is given by Nova Automation (“Seller”) with respect to the electrical equipment (“Product”) packaged with this limited warranty. The Product, when delivered to you in new condition in its original packaging, is warranted against defects in materials or workmanship as follows: For a period of one (1) year from the date of original purchase, defective parts or a defective Product returned to a Seller, or its authorized service providers, as applicable, and proven to be defective upon inspection, will be repaired, or exchanged for a new Product, as determined by the Seller, or the authorized service provider.

This limited warranty covers all defects encountered in normal use of the Product, and does not apply in the following cases: Loss of or damage to the Product due to abuse, mishandling, alteration, accident, electrical current fluctuations, failure to follow operating, maintenance or environmental instructions prescribed by Seller, failure to follow Sellers installation instructions, or service performed by someone other than Seller or its authorized service provider.

Nova assumes no responsibility for labor or freight costs incurred in connection with the installation, removal, or replacement of products determined to be defective or any consequential or incidental damages arising from the use of the product. Nova Automations entire liability on any claim of loss or damage resulting from a defective product is limited to the replacement of the product.

**WARRANTY IS VOID IF PRODUCT IS NOT USED FOR THE PURPOSE FOR WHICH IT WAS MANUFACTURED.**

## 8. Product Service and Technical Assistance

Nova Automation, LLC  
2722 N. Avondale Blvd  
Milwaukee WI 53210  
PH# 262-309-2950  
Website: [www.Novaautomation.net](http://www.Novaautomation.net)

## 9. Approvals

**Prepared By** \_\_\_\_\_  
([Job Title])

This document requires the following approvals

**Approved By** \_\_\_\_\_  
([Job Title])

\_\_\_\_\_  
([Job Title])

**Approval Date** \_\_\_\_\_